

MK Series

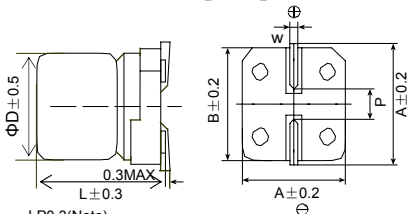
- Endurance : 1,000 to 2,000 hours at 105°C
- Suitable to fit for downsized equipment
- Solvent-proof type (see PRECAUTIONS AND GUIDELINES)
- RoHS Compliant



◆ SPECIFICATIONS

Items	Characteristics							
Category	-40 to +105°C (6.3 to 50Vdc)							
Temperature Range								
Rated Voltage Range	6.3 to 50Vdc							
Capacitance Tolerance	±20% (at 20°C, 120Hz)							
Leakage Current	V=6.3 to 50Vdc I=0.01CV or 3μA		Where, I : Max. leakage current (μA), C : Nominal capacitance (μF), V : Rated voltage (V) (at 20°C after 2 minutes)					
Dissipation Factor (tanδ)	Rated voltage (V _{dc})	6.3	10	16	25	35	50	(at 20°C, 120Hz)
	tanδ (Max.)	D55 to F55 H63 to JA0	0.30 0.40	0.24 0.30	0.20 0.26	0.16 0.16	0.14 0.14	
Low Temperature Characteristics (Max. Impedance Ratio)	Rated voltage (V _{dc})	6.3	10	16	25	35	50	(at 120Hz)
	Z(-25°C)/Z(+20°C)	4	3	2	2	2	2	
	Z(-40°C)/Z(+20°C)	10	8	6	4	3	3	
Endurance	The following specifications shall be satisfied when the capacitors are restored to 20°C after the rated period of time at 105°C.							
Shelf Life	Capacitance change	≤±20% of the initial value						
	D.F. (tanδ)	≤200% of the initial specified value						
	Leakage current	≤The initial specified value						
	The following specifications shall be satisfied when the capacitors are restored to 20°C after exposing them for 500 hours at 85°C							
Case Code	B55	D55 to JA0						
Capacitance change	≤±20% of the initial value						≤±15% of the initial value	
D.F. (tanδ)	≤200% of the initial specified value						≤150% of the initial specified	
Leakage current	≤The initial specified value						≤The initial specified value	

◆ DIMENSIONS [mm]

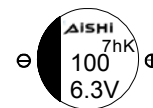


LP0.3(Note)
Note:LP0.5 for H63 to JA0

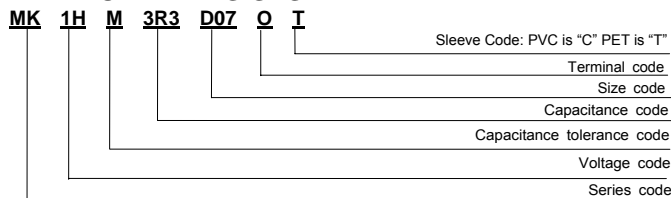
Size code	D	L	A	B	C	W	P
D55	4	5.2	4.3	4.3	5.1	0.5 to 0.8	1.0
E55	5	5.2	5.3	5.3	5.9	0.5 to 0.8	1.4
F55	6.3	5.2	6.6	6.6	7.2	0.5 to 0.8	1.9
H63	8	6.3	8.3	8.3	9.0	0.5 to 0.8	2.3
HA0	8	10.0	8.3	8.3	9.0	0.7 to 1.1	3.1
JA0	10	10.0	10.3	10.3	11.0	0.7 to 1.1	4.5

◆ RMARKING

EX)6.3V100μF



◆ PART NUMBERING SYSTEM



※Sleeve Code and Terminal Code should follow the part number system

MK Series

◆ STANDARD RATINGS

Vdc (V)	Cap (μF)	Size code	tanδ	Ripple current (mA _{rms} /85 °C, 120Hz)
6.3(OJ)	22	D55	0.30	21
	47	E55	0.30	36
	100	F55	0.30	56
	330	HA0	0.40	290
	1000	JA0	0.40	410
10(1A)	33	E55	0.24	34
	100	H63	0.30	90
	220	HA0	0.30	180
16(1C)	10	D55	0.20	16
	22	E55	0.20	30
	47	F55	0.20	48
	470	JA0	0.26	460
25(1E)	33	F55	0.16	45
	47	H63	0.16	80
	100	HA0	0.16	180
	330	JA0	0.16	450
35(1V)	4.7	D55	0.14	15

Vdc (V)	Cap (μF)	Size code	tanδ	Ripple current (mA _{rms} /85 °C, 120Hz)
35(1V)	10	E55	0.14	25
	22	F55	0.14	40
	33	H63	0.14	80
	220	JA0	0.14	375
50(1H)	0.10	D55	0.12	1.3
	0.22	D55	0.12	2.6
	0.33	D55	0.12	3.2
	0.47	D55	0.12	3.8
	1.0	D55	0.12	5.6
	2.2	D55	0.12	10
	3.3	D55	0.12	14
	4.7	E55	0.12	19
	10	F55	0.12	29
	22	H63	0.12	70
	33	HA0	0.12	140
	47	HA0	0.12	170
	100	JA0	0.12	310